

Internet Explorer 7.0 Standard Installation and Features



USING IE7 FOR THE FIRST TIME:

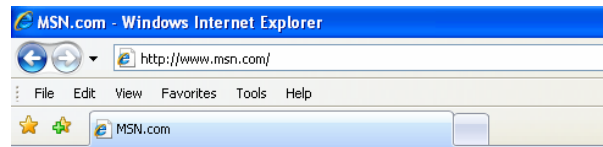
1. When IE7 is opened for the first time you will be directed to a page to customize your settings
 - a. **Required Settings:** Please choose your default search provider – check Keep my current search provider
 - b. **Optional Settings:** Check Turn on automatic Phishing Filter (Recommended)
 - i. If popup blocking is turned off, this will come up as a popup when IE is opened for the first time.
 - c. Scroll to the bottom and click the **Save settings** button
 - d. The next windows will say Settings saved successfully. Click **Go to your home page**
 - e. The **Menu Bar** that was displayed in earlier versions of Internet Explorer is turned off in Internet Explorer 7, but you can turn them back on.

- i. To display the menus temporarily:

1. Open Internet Explorer
2. Press **ALT**
3. Press **ALT** again will make it disappear

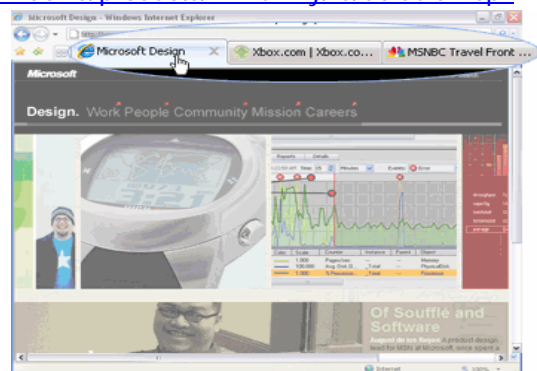
- ii. To display the menus permanently:

1. Open Internet Explorer
2. Click the **Tools** button and then select **Menu Bar**





FEATURES AND CHANGES IN IE7: For more information on the features and changes below click the **Help** on the Menu bar or go to <http://www.microsoft.com/windows/products/winfamily/ie/default.mspx>.

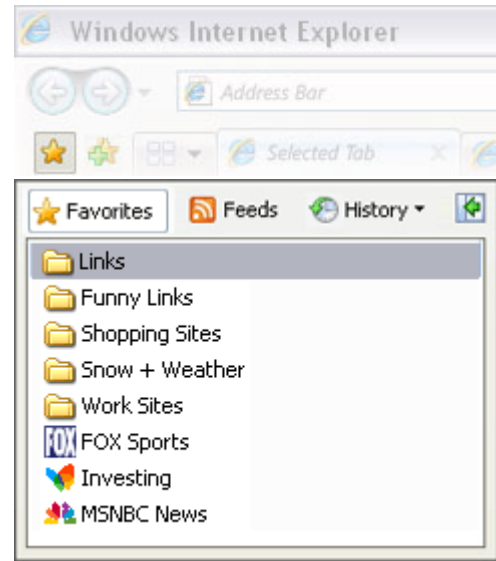
1. **Tabbed browsing** is a new feature in Internet Explorer that allows you to open multiple websites in a single browser window. You can open webpages or links on new tabs and then switch between them by clicking the tab. If you have a lot of tabs open, you can use Quick Tabs to easily switch between open tabs.



2. The new **Instant Search box** lets you search the web from the Address bar. You can also search using different search providers to get better results.



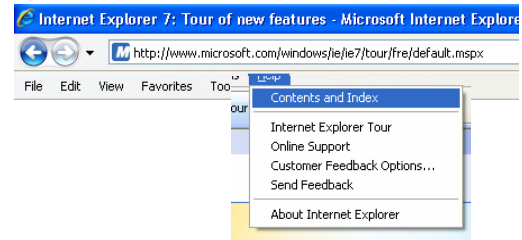
3. **Favorites:** The new Favorites Center makes it even easier to manage your favorite websites, your browsing history, and your RSS feeds with just a few clicks.
4. **RSS Feeds:** News agencies and other dynamic sites now offer a service called RSS Feeds or RSS. With RSS Feeds the website can feed or download information such as top headlines, current travel discounts, sports scores, and other timely content throughout the day to subscribers. If the Feed button  in Internet Explorer lights up, it means that the site offers RSS feeds. Click the icon to see the feed and, if you want, subscribe to have the feed automatically sent to your computer. When you click the subscribe button , the feed is automatically added to the Favorites Center and to the Common Feed List for sharing with other programs.



5. **Phishing Filter** can help protect you from phishing attacks, online fraud, and spoofed websites. What is phishing? Online phishing (pronounced like the word *fishing*) is a way to trick computer users into revealing personal or financial information through a fraudulent e-mail message or website. A common online phishing scam starts with an e-mail message that looks like an official notice from a trusted source, such as a bank, credit card company, or reputable online merchant. In the e-mail message, recipients are directed to a fraudulent website where they are asked to provide personal information, such as an account number or password. This information is then usually used for identity theft.



6. **Help:** By clicking Help on the Menu bar you can take a tour of IE7 or get help and information on the features above or anything else that you may have questions about.



Internet Explorer Web Site:

<http://www.microsoft.com/windows/products/winfamily/ie/default.aspx>